

## Product Datasheet

### GC3614 - Methyl-beta-cyclodextrin

#### Product Details

Product Name	Methyl-beta-cyclodextrin
Glentham Code	GC3614
CAS Number	128446-36-6
MDL-Nummer	MFCD00074980
PubChem SID	310276652
Related Categories	Carbohydrates, Biochemicals, Oligosaccharides

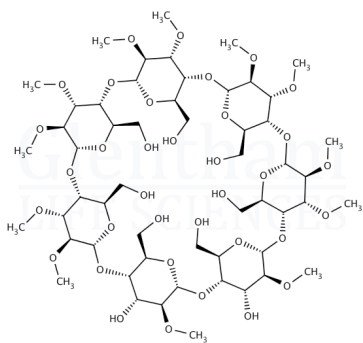
Degree of Substitution	: 7 - 14
Loss on Drying	: $\leq 4.5\%$
Residue on Ignition	: $\leq 2.0\%$
Heavy Metals	: $\leq 25\text{ppm}$
Assay	: $\geq 98.0\%$
Version	: v1.0

#### About Methyl-beta-cyclodextrin

No further details on record.

#### Structure

Molecular Weight : -  
Molecular Formula : -



#### Storage

Recommended storage temperature: +20°C.

#### Hazards and Transport

Not classified as hazardous under CLP.  
Not classified as dangerous for transport.

#### Glentham Product Specification

Physical Description : White powder

This document was generated electronically and is therefore valid without signature. © Glentham Life Sciences Ltd, 2025