

## Product Datasheet

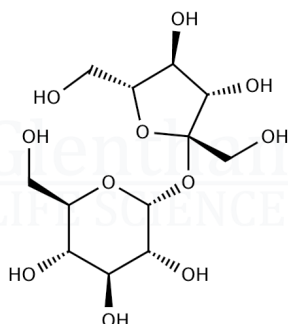
### GC4473 - Sucrose

#### Product Details

Product Name	Sucrose
Glentham Code	GC4473
CAS Number	57-50-1
EINECS	200-334-9
MDL-Nummer	MFCD00006626
PubChem SID	310280339
Related Categories	Carbohydrates, Core Carbohydrates, Biochemicals, Raw Materials (IVD), PCR, Reagents for Gel Electrophoresis of DNA/RNA, Oligosaccharides

#### Structure

Molecular Weight : 342.30  
Molecular Formula :  $C_{12}H_{22}O_{11}$



#### Storage

Recommended storage temperature: +20°C.

#### Hazards and Transport

Not classified as hazardous under CLP.  
Not classified as dangerous for transport.

#### Glentham Product Specification

Physical Description	: Colourless to white crystalline powder
Identification	: IR
Heavy Metals	: $\leq 5\text{ppm}$
Calcium (Ca)	: $\leq 0.05\%$
Residue on Ignition	: $\leq 0.1\%$
Reducing Sugars	: $\leq 0.1\%$
Specific Optical Rotation	: $66.3 - 67.0^\circ$
Purity	: $\geq 99.5\%$
Version	: v1.0

#### About Sucrose

No further details on record.