

Product Datasheet

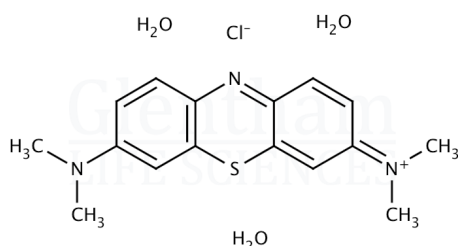
GT0735 - Methylene Blue trihydrate (C.I. 52015)

Product Details

Product Name	Methylene Blue trihydrate (C.I. 52015)
Glenthams Code	GT0735
CAS Number	7220-79-3
EINECS	200-515-2
Farbindex	52015
MDL-Nummer	MFCD00012111
Zusätzliche CAS	61-73-4 (anhydrous)
Zusätzliche CAS	122965-43-9 ($\cdot xH_2O$)
PubChem SID	310276717
Related Categories	Biochemicals, Dyes & Stains

Structure

Molecular Weight	: 373.90
Molecular Formula	: $C_{16}H_{18}ClN_3S \cdot 3H_2O$



Storage

Recommended storage temperature: +20°C.

Hazards and Transport

Not classified as dangerous for transport.
CLP Classification Acute Tox. 4

Signal Word
Hazard Codes
Precautionary Codes

Achtung
H302
P280, P302+P352,
P305+P351+P338, P261,
P301+P312

Pictograms



Glenthams Product Specification

Physical Description	: Dark green crystalline powder
Solubility (0.1% in water)	: Clear, blue to dark blue solution
Zinc (Zn)	: To pass test
Loss on Drying	: 8.0 - 15.0 %
Assay	: 98.0 - 103.0 % (dried basis)
Version	: v1.0

About Methylene Blue trihydrate (C.I. 52015)

Methylene blue is a synthetic dye first used in the textile industry. It is used as a biological stain, staining nucleic acids and other negatively charged cell components. Methylene blue has also been used in medicine as a treatment for methemoglobinemia and in aquaculture for treating fungal infections in fish.

This document was generated electronically and is therefore valid without signature. © Glenthams Life Sciences Ltd, 2025