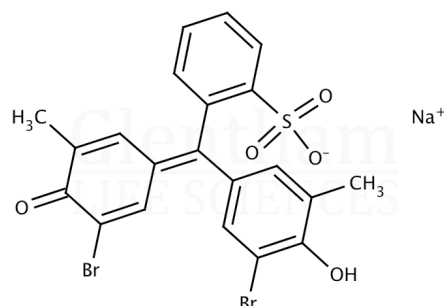


Product Specification

Product Name	Bromocresol Purple sodium salt
Glentham Code	GT2398
CAS Number	62625-30-3
EINECS	263-655-3
MDL-Nummer	MFCD00148896
PubChem SID	310268869
Molecular Weight	562.22
Molecular Formula	$C_{21}H_{15}Br_2NaO_5S$
Storage Temp.	+20°C



Property	Specification
Physical Description	Purple-brown to dark orange crystalline powder
Transition Range	5.2 - 6.8 (yellow to purple)
Solubility (0.1% in water)	Clear, red-yellow to green-yellow solution
Wavelength of Maximum Absorption (λ_{max})	587.0 - 591.0 nm (0.1M NaOH)
Absorptivity (1%/1cm)	≥ 850 (λ_{max})
Loss on Drying	$\leq 7.0\%$ (110°C, 1h)
Dye Content (Spectrophotometry)	$\geq 90.0\%$

Specification Version	- v1.0
Date Created	- 2014-02-13

Glentham Life Sciences confirm that the above referenced product conformed to the information displayed in this document on the quality release date. Please check www.glentham.com or contact us using the details above for the current version of this document.

This document was generated electronically and is therefore valid without signature. © Glentham Life Sciences Ltd, 2025