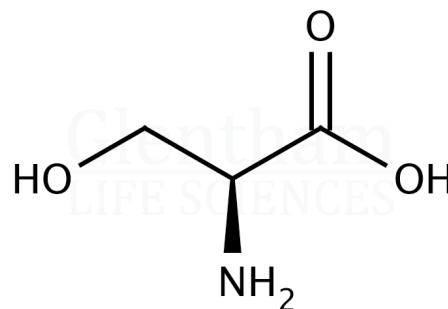


Certificate of Analysis

Product Name	L-Serine, GlenCell™, suitable for cell culture
Glentham Code	GM7000
CAS Number	56-45-1
EINECS	200-274-3
MDL-Nummer	MFCD00064224
Batch Number	664CVA

Molecular Weight	105.09
Molecular Formula	C ₃ H ₇ NO ₃
Storage Temp.	+20°C



Property	Specification	Batch 664CVA
Physical Description	White crystals or crystalline powder	White crystals
Identification	IR	Entspricht
Solubility	Freely soluble in water and in formic acid, practically insoluble in ethanol	Entspricht
Solubility (5% in water)	Clear, colourless solution	Entspricht
Transmittance	≥ 98.0% (5% in water, 430nm, 10mm cell)	100.1%
Specific Optical Rotation	+14.4 - +15.5 ° (c=10, 2M HCl)	+15.4°
Chloride (Cl)	≤ 0.02%	Entspricht
Ammonium (NH ₄)	≤ 0.02%	Entspricht
Sulphate (SO ₄)	≤ 0.02%	Entspricht
Iron (Fe)	≤ 10ppm	Entspricht
Heavy Metals (as Pb)	≤ 10ppm	≤ 5ppm
Arsenic (As ₂ O ₃)	≤ 1ppm	Entspricht
Related Substances	To pass test	Entspricht
Loss on Drying	≤ 0.2%	0.02%
Sulphated Ash	≤ 0.1%	0.0%
pH	5.2 - 6.2 (10% in water)	5.8
Residual Solvents	≤ 200ppm (Methanol)	Entspricht
Endotoxins	≤ 6.0EU/g	≤ 3.0EU/g
Assay	98.5 - 101.0 %	100.1%
Origin	Non-animal origin	Entspricht

Specification Version	v1.0
Manufacture Date	2021-05-30
Re-Test Date	2029-01-18

Glentham Life Sciences confirm that the above referenced product conformed to the information displayed in this document on the quality release date. Please check www.glentham.com or contact us using the details above for the current version of this document.

This document was generated electronically and is therefore valid without signature. © Glentham Life Sciences Ltd, 2025