

## Product Datasheet

### GC3614 - Methyl-beta-cyclodextrin

#### Product Details

Product Name	Methyl-beta-cyclodextrin
Glentham Code	GC3614
CAS Number	128446-36-6
MDL Number	MFCD00074980
PubChem SID	310276652
Related Categories	Carbohydrates, Biochemicals, Oligosaccharides

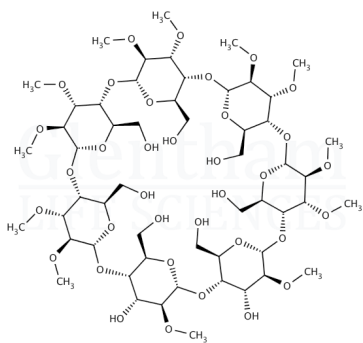
Degree of Substitution	: 7 - 14
Loss on Drying	: ≤ 4.5%
Residue on Ignition	: ≤ 2.0%
Heavy Metals	: ≤ 25ppm
Assay	: ≥ 98.0%
Version	: v1.0

#### About Methyl-beta-cyclodextrin

No further details on record.

#### Structure

Molecular Weight : -  
Molecular Formula : -



#### Storage

Recommended storage temperature: +20°C.

#### Hazards and Transport

Not classified as hazardous under CLP.  
Not classified as dangerous for transport.

#### Glentham Product Specification

Physical Description : White powder

This document was generated electronically and is therefore valid without signature. © Glentham Life Sciences Ltd, 2024