

Product Datasheet

GC4298 - Ethyl cellulose, 100 cP

Product Details

Product Name	Ethyl cellulose, 100 cP
Glentham Code	GC4298
CAS Number	9004-57-3
MDL Number	MFCD00131037
Related Categories	Carbohydrates, Polysaccharides

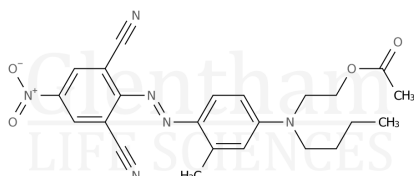
Viscosity	: 90 - 110 mPa.s (5% in Toluene and Ethanol (80:20))
Loss on Drying	: ≤ 3.0%
Version	: v1.0

About Ethyl cellulose, 100 cP

No further details on record.

Structure

Molecular Weight : -
Molecular Formula : -



Storage

Recommended storage temperature: +20°C.

Hazards and Transport

Not classified as hazardous under CLP.
Not classified as dangerous for transport.

Glentham Product Specification

Physical Description : White to off-white powder

This document was generated electronically and is therefore valid without signature. © Glentham Life Sciences Ltd, 2025