

## Product Datasheet

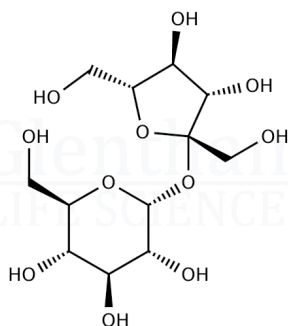
### GC4473 - Sucrose

#### Product Details

|                    |   |
|--------------------|---|
| Product Name       | Sucrose   |
| Glentham Code      | GC4473  |
| CAS Number         | 57-50-1   |
| EINECS             | 200-334-9   |
| MDL Number         | MFCD00006626  |
| PubChem SID        | 310280339   |
| Related Categories | Carbohydrates, Core Carbohydrates, Biochemicals, Raw Materials (IVD), Reagents for PCR, Reagents for Gel Electrophoresis of DNA/RNA, Oligosaccharides |

#### Structure

|                   |   |
|-------------------|---|
| Molecular Weight  | : 342.30  |
| Molecular Formula | : C <sub>12</sub> H <sub>22</sub> O <sub>11</sub> |



#### Storage

Recommended storage temperature: +20°C.

#### Hazards and Transport

Not classified as hazardous under CLP.  
Not classified as dangerous for transport.

#### Glentham Product Specification

|                           |  |
|---------------------------|--|
| Physical Description      | : Colourless to white crystalline powder |
| Identification            | : IR                                     |
| Heavy Metals              | : ≤ 5ppm                                 |
| Calcium (Ca)              | : ≤ 0.05%                                |
| Residue on Ignition       | : ≤ 0.1%                                 |
| Reducing Sugars           | : ≤ 0.1%                                 |
| Specific Optical Rotation | : 66.3 - 67.0 °                          |
| Purity                    | : ≥ 99.5%                                |
| Version                   | : v1.0                                   |

#### About Sucrose

No further details on record.

This document was generated electronically and is therefore valid without signature. © Glentham Life Sciences Ltd, 2024