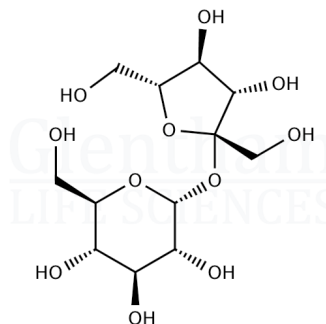


Product Specification

Product Name	Sucrose
Glentham Code	GC4473
CAS Number	57-50-1
EINECS	200-334-9
MDL Number	MFCD00006626
PubChem SID	310280339
Molecular Weight	342.30
Molecular Formula	$C_{12}H_{22}O_{11}$
Storage Temp.	+20°C



Property	Specification
Physical Description	Colourless to white crystalline powder
Identification	IR
Heavy Metals	≤ 5ppm
Calcium (Ca)	≤ 0.05%
Residue on Ignition	≤ 0.1%
Reducing Sugars	≤ 0.1%
Specific Optical Rotation	66.3 - 67.0 °
Purity	≥ 99.5%

Specification Version	-	v1.0
Date Created	-	2013-10-04

Glentham Life Sciences confirm that the above referenced product conformed to the information displayed in this document on the quality release date. Please check www.glentham.com or contact us using the details above for the current version of this document.

This document was generated electronically and is therefore valid without signature. © Glentham Life Sciences Ltd, 2025