

## Product Datasheet

### GC5831 - beta-Lactose

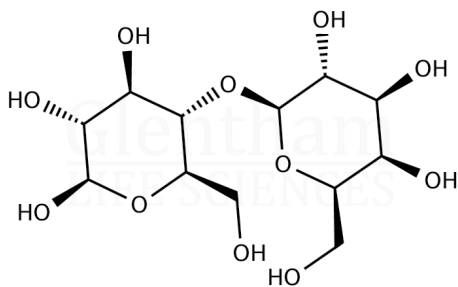
#### Product Details

Product Name	beta-Lactose
Glentham Code	GC5831
CAS Number	5965-66-2
EINECS	227-751-9
MDL Number	MFCD00064521
PubChem SID	310275677
Related Categories	Carbohydrates, Oligosaccharides

Physical Description	: White to off-white powder
Solubility (5% in water)	: Clear, colourless solution
Heavy Metals (as Pb)	: ≤ 5ppm
Sulphated Ash	: ≤ 0.1%
Loss on Drying	: ≤ 1.0%
alpha-Lactose	: ≤ 30%
beta-Lactose	: ≥ 70%
Lactose	: ≥ 98%
Version	: v1.0

#### Structure

Molecular Weight : 342.30  
Molecular Formula :  $C_{12}H_{22}O_{11}$



#### About beta-Lactose

No further details on record.

#### Storage

Recommended storage temperature: +20°C.

#### Hazards and Transport

Not classified as hazardous under CLP.  
Not classified as dangerous for transport.

#### Glentham Product Specification

This document was generated electronically and is therefore valid without signature. © Glentham Life Sciences Ltd, 2024