

## Product Datasheet

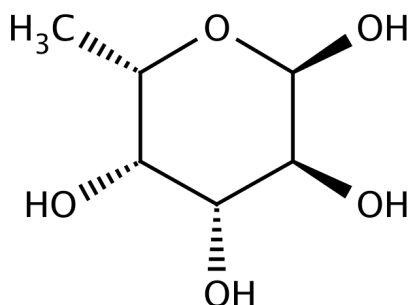
### GC7288 - L-(-)-Fucose

#### Product Details

Product Name	L-(-)-Fucose
Glenthams Code	GC7288
CAS Number	2438-80-4
EINECS	219-452-7
Additional CAS	6696-41-9
MDL Number	MFCD00135607
Bellstein Registry Number	1723321
PubChem SID	310273955
Related Categories	Carbohydrates, Core Carbohydrates, Biochemicals

#### Structure

Molecular Weight : 164.16  
Molecular Formula :  $C_6H_{12}O_5$



#### Storage

Recommended storage temperature: +20°C.

#### Hazards and Transport

Not classified as hazardous under CLP.  
Not classified as dangerous for transport.

### Glenthams Product Specification

Physical Description	: White to almost white crystalline powder
Identification (IR)	: To conform to standard
Specific Optical Rotation ([α] <sub>D</sub> <sup>20</sup> )	: -72.0 - -77.0 ° (c=1, water)
Melting Point	: 135.0 - 139.0 °C
Water (KF)	: ≤ 1.0%
Purity (HPLC)	: ≥ 98.0%
Version	: v1.2

#### About L-(-)-Fucose

L-Fucose is a naturally occurring deoxyhexose monosaccharide. It is found in mammalian n-linked glycans and is also a fundamental subunit of fucoidan, a polysaccharide found in brown seaweed. L-fucose has applications in cosmetics and as a substrate in enzyme studies. This product is manufactured from seaweed.