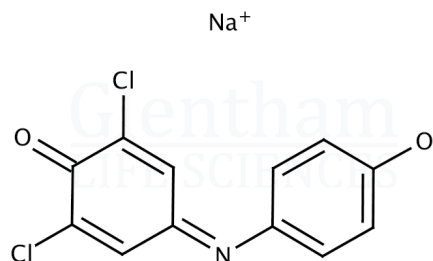


## Product Specification

Product Name	2,6-Dichloroindophenol sodium salt, EP grade
Glentham Code	GE2832
CAS Number	620-45-1
EINECS	210-640-4
MDL Number	MFCD00150014
Additional CAS	1266615-56-8 ( $\cdot xH_2O$ )

Molecular Weight	290.08 (anhydrous)
Molecular Formula	$C_{12}H_6Cl_2NNaO_2 \cdot xH_2O$
Storage Temp.	+20°C



Property	Specification
Physical Description	Green to dark blue powder
Solubility	According to EP
Wavelength of Maximum Absorption ( $\lambda_{max}$ )	640 - 645 nm
Absorptivity (1%/1cm)	According to EP
Loss on Drying	$\leq 14.0\%$
Assay (Titration)	$\geq 98.0\%$
Pharmacopoeia Specification(s)	EP

Specification Version	- v1.0
Date Created	- 2020-12-11

Glentham Life Sciences confirm that the above referenced product conformed to the information displayed in this document on the quality release date. Please check [www.glentham.com](http://www.glentham.com) or contact us using the details above for the current version of this document.

This document was generated electronically and is therefore valid without signature. © Glentham Life Sciences Ltd, 2024