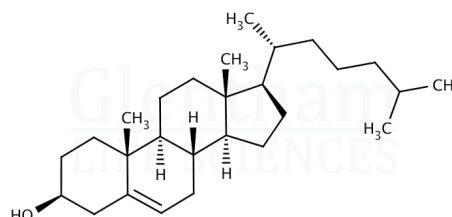


Product Specification

Product Name	Cholesterol, non-animal origin
Glentham Code	GE7110
CAS Number	57-88-5
EINECS	200-353-2
MDL Number	MFCD00003646
Molecular Weight	386.66
Molecular Formula	$C_{27}H_{46}O$
Storage Temp.	+4°C



Property	Specification
Physical Description	White to almost white crystalline powder
Melting Point	147 - 150 °C
Identification	TLC
	Test C according to EP
Specific Optical Rotation	-43.0 - -39.0 ° (c=2, CHCl ₃)
Solubility (1% in ethanol)	Clear solution (2h, 50°C)
Acidity	≤ 0.3ml
Sulphated Ash	≤ 0.1%
Heavy Metals	≤ 10ppm
Loss on Drying	≤ 0.3% (4h, 60°C)
Total Aerobic Microbial Count	≤ 100CFU/g
Mould and Yeast	≤ 100CFU/g
Endotoxins	≤ 1.0EU/mg
Assay	≥ 99.0% (cholesterol, dried basis)
Pharmacopoeia Specification(s)	EP
Source	Vegetal

Specification Version	-	v1.0
Date Created	-	2016-07-06

Glentham Life Sciences confirm that the above referenced product conformed to the information displayed in this document on the quality release date. Please check www.glentham.com or contact us using the details above for the current version of this document.

This document was generated electronically and is therefore valid without signature. © Glentham Life Sciences Ltd, 2024