

Product Datasheet

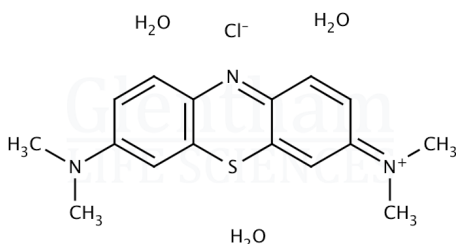
GE7263 - Methylene Blue trihydrate (C.I. 52015); Ph. Eur. grade

Product Details

Product Name	Methylene Blue trihydrate (C.I. 52015); Ph. Eur. grade
Glenthams Code	GE7263
CAS Number	7220-79-3
EINECS	200-515-2
Colour Index	52015
MDL Number	MFCD00012111
Additional CAS	61-73-4 (anhydrous)
Additional CAS	122965-43-9 (\cdot xH ₂ O)
Related Categories	Biochemicals, Dyes & Stains

Structure

Molecular Weight	: 373.90
Molecular Formula	: C ₁₆ H ₁₈ ClN ₃ S \cdot 3H ₂ O



Hazard Codes

H302

Precautionary Codes

P280, P302+P352,
P305+P351+P338, P261,
P301+P312

Pictograms



Glenthams Product Specification

Physical Description	: Dark green crystalline powder
Identification (UV-VIS)	: To pass test
Wavelength of Maximum Absorption (λ_{max})	: 660 - 665 nm (50% in ethanol)
Absorptivity (1%/1cm)	: 2250 - 2750 (50% in ethanol)
Loss on Drying	: 8.0 - 16.0 % (110°C)
Pharmacopoeia Specification(s)	: EP
Version	: v1.0

About Methylene Blue trihydrate (C.I. 52015); Ph. Eur. grade

Methylene blue is a synthetic dye first used in the textile industry. It is used as a biological stain, staining nucleic acids and other negatively charged cell components. Methylene blue has also been used in medicine as a treatment for methemoglobinemia and in aquaculture for treating fungal infections in fish.

Storage

Recommended storage temperature: +20°C.

Hazards and Transport

Not classified as dangerous for transport.	
CLP Classification	Acute Tox. 4
Signal Word	Warning

This document was generated electronically and is therefore valid without signature. © Glenthams Life Sciences Ltd, 2025