

## Product Datasheet

### GK2515 - Sodium lactobionate

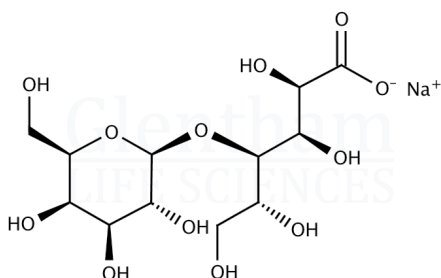
#### Product Details

Product Name	Sodium lactobionate
Glentham Code	GK2515
CAS Number	27297-39-8
PubChem SID	310280125
MDL Number	MFCD06658158
Related Categories	Carbohydrates, Core Carbohydrates, Biochemicals

Solubility (2% in water)	: Clear, colourless to faint yellow solution
Specific Optical Rotation ([ $\alpha$ ] <sub>20/D</sub> )	: +20.0 - +23.0 ° (c=2, water)
Melting Point	: 165 - 175 °C
Heavy Metals (as Pb)	: ≤ 30ppm
Loss on Drying	: ≤ 1.0%
Assay (Titration)	: 98.0 - 102.0 %
Version	: v1.2

#### Structure

Molecular Weight	: 380.28
Molecular Formula	: C <sub>12</sub> H <sub>21</sub> NaO <sub>12</sub>



#### About Sodium lactobionate

No further details on record.

#### Storage

Recommended storage temperature: +20°C.

#### Hazards and Transport

Not classified as hazardous under CLP.  
Not classified as dangerous for transport.

#### Glentham Product Specification

Physical Description : White to pale yellow crystalline powder

This document was generated electronically and is therefore valid without signature. © Glentham Life Sciences Ltd, 2024