

## Product Datasheet

### GK6552 - Ethyl 2-chloroacetoacetate

Pictograms



#### Product Details

Product Name	Ethyl 2-chloroacetoacetate
Glenthams Code	GK6552
CAS Number	609-15-4
EINECS	210-180-4
MDL Number	MFCD00009141
PubChem SID	310272794

#### Glenthams Product Specification

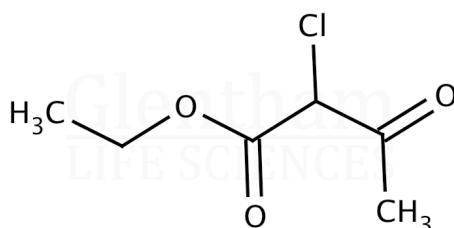
Physical Description	: Clear, colourless to yellow liquid
Refractive Index (20°C)	: 1.4390 - 1.4460
Purity (GC)	: ≥ 95.0%
Version	: v1.0

#### Structure

Molecular Weight	: 164.59
Molecular Formula	: C <sub>6</sub> H <sub>9</sub> ClO <sub>3</sub>

#### About Ethyl 2-chloroacetoacetate

No further details on record.



#### Storage

Recommended storage temperature: .

#### Hazards and Transport

Not classified as dangerous for transport.

CLP Classification	Skin Irr. 2, Eye Irr. 2A, STOT SE 3, STOT SE 3, Acute Tox. 4
Signal Word	Warning
Hazard Codes	H315, H319, H335, H336, H302
Precautionary Codes	P280, P302+P352, P305+P351+P338, P261, P301+P312

This document was generated electronically and is therefore valid without signature. © Glenthams Life Sciences Ltd, 2025