

## Product Datasheet

### GL4239 - Chromotrope FB (C.I. 14720)

Precautionary Codes

P280, P261, P302+P352,  
P305+P351+P338

Pictograms

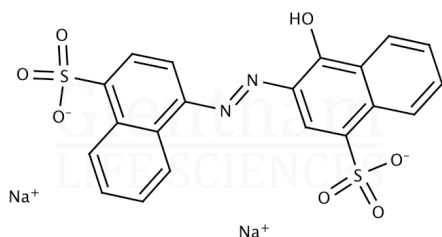


#### Product Details

Product Name	Chromotrope FB (C.I. 14720)
Glenthams Code	GL4239
CAS Number	3567-69-9
EINECS	222-657-4
MDL Number	MFCD00003978
Colour Index	14720
PubChem SID	310270231
Related Categories	Dyes & Stains

#### Structure

Molecular Weight	: 502.42
Molecular Formula	: C <sub>20</sub> H <sub>12</sub> N <sub>2</sub> Na <sub>2</sub> O <sub>7</sub> S <sub>2</sub>



#### Glenthams Product Specification

Physical Description	: Red to dark red powder
Solubility	: Soluble in water
Water Insoluble Matter	: ≤ 0.2%
Subsidiary Dyes	: ≤ 1.0%
Lead (Pb)	: ≤ 2ppm
Arsenic (As)	: ≤ 3ppm
Mercury	: ≤ 1ppm
Cadmium (Cd)	: ≤ 1ppm
Loss on Drying	: ≤ 15.0%
Ether Extracts	: ≤ 0.2%
Assay	: ≥ 85.0% (total colour)
Version	: v1.0

#### About Chromotrope FB (C.I. 14720)

No further details on record.

#### Storage

Recommended storage temperature: +20°C.

#### Hazards and Transport

Not classified as dangerous for transport.

CLP Classification Skin Irr. 2, STOT SE 3,  
STOT SE 3, Eye Irr. 2A

Signal Word Warning

Hazard Codes H315, H336, H335, H319

This document was generated electronically and is therefore valid without signature. © Glenthams Life Sciences Ltd, 2025