

Product Datasheet

GL7970 -

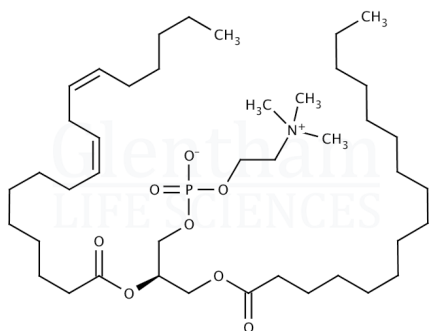
L-alpha-Phosphatidylcholine, 90%

Product Details

| | |
|--------------------|----------------------------------|
| Product Name | L-alpha-Phosphatidylcholine, 90% |
| Glentham Code | GL7970 |
| CAS Number | 8002-43-5 |
| EINECS | 232-307-2 |
| MDL Number | MFCD00131449 |
| PubChem SID | 310278931 |
| Related Categories | Biochemicals |

Structure

Molecular Weight :
Molecular Formula :



Physical Description : Yellow to light brown waxy solid

Phosphatidylcholine : $\geq 90.0\%$

Lysophosphatidylcholine : $\geq 5.0\%$

Phosphorus : 3.7 - 4.0 %

Water (KF) : $\leq 1.0\%$

Peroxide Value : $\leq 10\text{meq/kg}$

Acid Value : $\leq 5\text{mgKOH/g}$

Ethanol Soluble Matter : $\geq 99.0\%$

Ethanol : $\leq 0.2\%$

Heavy Metals (as Pb) : $\leq 10\text{ppm}$

Microbiological Counts : Total plate count: $\leq 100\text{cfu/g}$

: Yeast and moulds: $\leq 10\text{cfu/g}$

: Coilform: Absent/g

: Salmonella: Absent/25g

: Bacterial endotoxins: 6EU/g

Origin : Soya bean

Version : v1.0

About L-alpha-Phosphatidylcholine, 90%

No further details on record.

Storage

Recommended storage temperature: -20°C .

Hazards and Transport

Not classified as hazardous under CLP.

Not classified as dangerous for transport.

Glentham Product Specification

This document was generated electronically and is therefore valid without signature. © Glentham Life Sciences Ltd, 2025