

Product Datasheet

GM0002 - L-Phenylalanine methyl ester hydrochloride

Precautionary Codes

P280, P261, P302+P352,
P305+P351+P338

Pictograms



Product Details

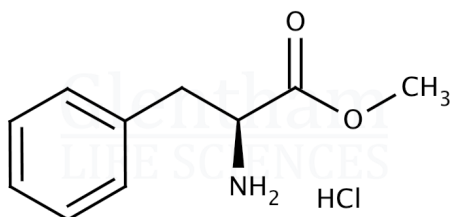
Product Name	L-Phenylalanine methyl ester hydrochloride
Glentham Code	GM0002
CAS Number	7524-50-7
EINECS	231-383-4
MDL Number	MFC00012489
PubChem SID	310278766
Related Categories	Amino Acids, Biochemicals

Glentham Product Specification

Physical Description	: White or off-white powder or crystals
Specific Optical Rotation	: +31.0 - +35.0 ° (c=2, ethanol)
Melting Point	: 158.0 - 165.0 °C
Loss on Drying	: ≤ 2.0%
Assay	: 98.0 - 102.0 %
Version	: v1.0

Structure

Molecular Weight	: 215.68
Molecular Formula	: C ₁₀ H ₁₃ NO ₂ · HCl



About L-Phenylalanine methyl ester hydrochloride

No further details on record.

Storage

Recommended storage temperature: +20°C.

Hazards and Transport

Not classified as dangerous for transport.	
CLP Classification	Skin Irr. 2, STOT SE 3, STOT SE 3, Eye Irr. 2A
Signal Word	Warning
Hazard Codes	H315, H336, H335, H319

This document was generated electronically and is therefore valid without signature. © Glentham Life Sciences Ltd, 2024