

## Product Datasheet

### GM3732 - L-Cysteine ethyl ester hydrochloride

#### Product Details

Product Name	L-Cysteine ethyl ester hydrochloride
Glentham Code	GM3732
CAS Number	868-59-7
EINECS	212-779-6
MDL Number	MFCDD00012631
PubChem SID	310270754
Related Categories	Amino Acids, Biochemicals

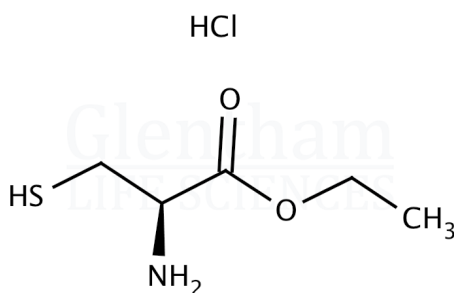
Physical Description	: White powder
Solubility (5% in water)	: Clear to very faintly turbid, colourless solution
Specific Optical Rotation ([ $\alpha$ ] <sub>20/D</sub> )	: -11.0 - -13.0 ° (c=2, 1M HCl)
Assay (Titration)	: 98.0 - 102.0 %
Version	: v1.0

#### About L-Cysteine ethyl ester hydrochloride

No further details on record.

#### Structure

Molecular Weight	: 185.67
Molecular Formula	: C <sub>5</sub> H <sub>11</sub> NO <sub>2</sub> S · HCl



#### Storage

Recommended storage temperature: +20°C.

#### Hazards and Transport

Not classified as hazardous under CLP.  
Not classified as dangerous for transport.

#### Glentham Product Specification

This document was generated electronically and is therefore valid without signature. © Glentham Life Sciences Ltd, 2024