

Product Datasheet

GM4839 - L-Lysine methyl ester dihydrochloride

Product Details

Product Name	L-Lysine methyl ester dihydrochloride
Glentham Code	GM4839
CAS Number	26348-70-9
EINECS	247-625-7
MDL Number	MFCD00039067
PubChem SID	310275927
Related Categories	Amino Acid Derivatives

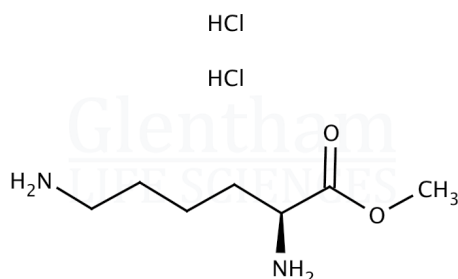
Physical Description	: White to almost white powder or crystals
Solubility (5% in water)	: Clear, colourless solution
Specific Optical Rotation ([α] _{20/D})	: +13.0 - +19.0 ° (c=5, water)
Assay	: $\geq 98.0\%$
Version	: v1.0

About L-Lysine methyl ester dihydrochloride

No further details on record.

Structure

Molecular Weight	: 233.14
Molecular Formula	: $C_7H_{16}N_2O_2 \cdot 2HCl$



Storage

Recommended storage temperature: +20°C.

Hazards and Transport

Not classified as hazardous under CLP.
Not classified as dangerous for transport.

Glentham Product Specification

This document was generated electronically and is therefore valid without signature. © Glentham Life Sciences Ltd, 2025