

Product Datasheet

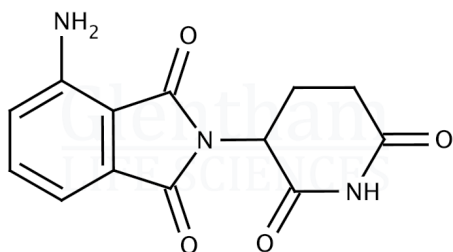
GP0062 - Pomalidomide

Product Details

Product Name	Pomalidomide
Glentham Code	GP0062
CAS Number	19171-19-8
PubChem SID	310279125
Related Categories	APIs

Structure

Molecular Weight	: 273.24
Molecular Formula	: C ₁₃ H ₁₁ N ₃ O ₄




Storage

Recommended storage temperature: +4°C.

Hazards and Transport

Not classified as dangerous for transport.

CLP Classification	Repr. 2
Signal Word	Warning
Hazard Codes	H361
Precautionary Codes	P280, P308+P313
Pictograms	

Glentham Product Specification

Physical Description	: Yellow to green powder
Identification (IR)	: To conform to standard
Loss on Drying	: ≤ 1.0%
Assay	: ≥ 98.5%
Version	: v1.0

About Pomalidomide

No further details on record.