

Product Datasheet

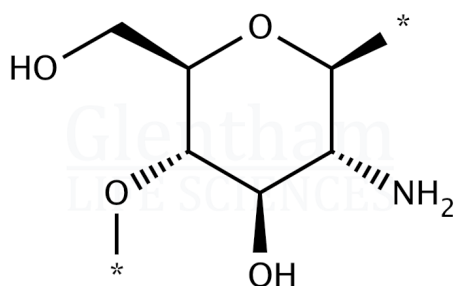
GP8956 - Chitosan (300 - 1000 cps); medium molecular weight

Product Details

Product Name	Chitosan (300 - 1000 cps); medium molecular weight
Glentham Code	GP8956
CAS Number	9012-76-4
EINECS	618-480-0
MDL Number	MFCD00161512
Related Categories	APIs, Carbohydrates, Biochemicals, Natural Products, Polysaccharides, Oligosaccharides, Chitin & Chitosan, Cosmetic Raw Materials

Structure

Molecular Weight : 1,250,000 (avg.)
Molecular Formula : $[C_6H_{11}NO_4]_n$



Glentham Product Specification

Physical Description	: White to light-tan powder
Degree of Deacetylation	: $\geq 90.0\%$
Ash	: $\leq 1.0\%$
Viscosity	: 300 - 1000 cps
Water	: $\leq 8.0\%$
Solubility (in acetic acid)	: $\geq 99\%$
pH	: 6.0 - 8.0 (1%, 20°C)
Arsenic (As)	: $\leq 1\text{mg/kg}$
Lead (Pb)	: $\leq 0.5\text{mg/kg}$
Mercury (Hg)	: $\leq 0.1\text{mg/kg}$
Particle Size	: ≤ 100 mesh
Microbiological Counts	: E. coli: ≤ 3 MPN/g : Salmonella spp.: Absent : Yeast and Moulds: ≤ 100 CFU/g : Total Plate Count: ≤ 1000 CFU/g
Version	: v1.1

About Chitosan (300 - 1000 cps); medium molecular weight

Chitosan is a polysaccharide comprised of linked D-glucosamine and N-acetyl-D-glucosamine units. It is produced by the deacetylation of chitin, a naturally occurring polysaccharide. Chitosan is commercially used in agriculture as a biopesticide but has potential applications in the biomedical field due to its antibacterial properties. This product is derived from shrimp shell.

Storage

Recommended storage temperature: +20°C.

Hazards and Transport

Not classified as hazardous under CLP.

Not classified as dangerous for transport.

This document was generated electronically and is therefore valid without signature. © Glentham Life Sciences Ltd, 2025