

Product Datasheet

GP9419 - Pramipexole

Product Details

Product Name	Pramipexole
Glentham Code	GP9419
CAS Number	104632-26-0
PubChem SID	310279194
Related Categories	APIs

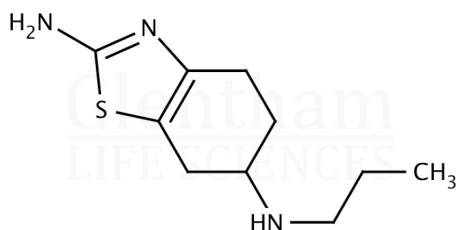
Sulphated Ash	: ≤ 0.5%
Heavy Metals	: ≤ 20ppm
Version	: v1.0

About Pramipexole

No further details on record.

Structure

Molecular Weight	: 211.33
Molecular Formula	: C ₁₀ H ₁₇ N ₃ S



Storage

Recommended storage temperature: +4°C.

Hazards and Transport

Not classified as hazardous under CLP.
Not classified as dangerous for transport.

Glentham Product Specification

Physical Description	: White to off-white powder
Assay (HPLC)	: ≥ 98.0%
Loss on Drying	: ≤ 1.0%

This document was generated electronically and is therefore valid without signature. © Glentham Life Sciences Ltd, 2025