

Product Datasheet

GT0259 - Meldola's blue

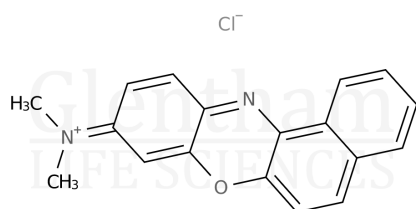
Product Details

Product Name	Meldola's blue
Glenthams Code	GT0259
CAS Number	7057-57-0
EINECS	230-338-6
MDL Number	MFCD00012113
Related Categories	Dyes & Stains

Physical Description	: Dark green to black powder
Solubility (1% in ethanol)	: Blue to dark purple solution, may contain some insoluble matter
Nitrogen (N)	: 5.5 - 7.8 %
Zinc (Zn)	: 6.0 - 8.6 %
Chloride (Cl)	: 14.0 - 18.7 %
Wavelength of Maximum Absorption (λ_{max1})	: 565.0 - 575.0 nm (0.4mg/100ml, water)
Version	: v1.1

Structure

Molecular Weight	: 378.92
Molecular Formula	: $C_{18}H_{15}ClN_2O \cdot 0.5[Cl_2Zn]$



About Meldola's blue

No further details on record.

Storage

Recommended storage temperature: +20°C.

Hazards and Transport

Not classified as hazardous under CLP.
Not classified as dangerous for transport.

Glenthams Product Specification

This document was generated electronically and is therefore valid without signature. © Glenthams Life Sciences Ltd, 2025