

Product Datasheet

GT0850 - Methylene Blue solution, 1% in water

Hazard Codes

H302

Precautionary Codes

P280, P261, P301+P312

Pictograms



Product Details

Product Name	Methylene Blue solution, 1% in water
Glenthams Code	GT0850
CAS Number	61-73-4
EINECS	200-515-2
MDL Number	MFCD00150006
Additional CAS	7220-79-3 ($\cdot 3\text{H}_2\text{O}$)
Additional CAS	122965-43-9 ($\cdot x\text{H}_2\text{O}$)
Related Categories	Dyes & Stains, Reagents for Gel Electrophoresis of DNA/RNA, Dye Solutions

Glenthams Product Specification

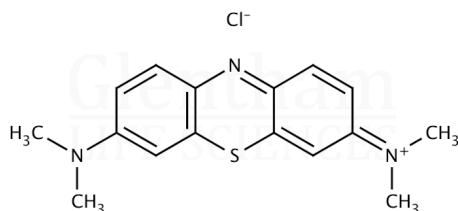
Physical Description	: Blue to very dark blue liquid
Concentration (w/v)	: 1.0g/100ml
Version	: v1.0

About Methylene Blue solution, 1% in water

No further details on record.

Structure

Molecular Weight	: 319.86
Molecular Formula	: $\text{C}_{16}\text{H}_{18}\text{ClN}_3\text{S}$



Storage

Recommended storage temperature: +20°C.

Hazards and Transport

Not classified as dangerous for transport.	
CLP Classification	Acute Tox. 4
Signal Word	Warning

This document was generated electronically and is therefore valid without signature. © Glenthams Life Sciences Ltd, 2025