

## Product Datasheet

### GT3351 - Chlorophenol Red sodium salt

Precautionary Codes

P280, P261, P302+P352,  
P305+P351+P338

Pictograms

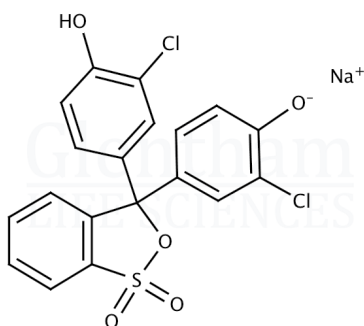


#### Product Details

Product Name	Chlorophenol Red sodium salt
Glentham Code	GT3351
CAS Number	123333-64-2
EINECS	224-619-2
MDL Number	MFCD00151199
PubChem SID	310270028
Related Categories	Dyes & Stains

#### Structure

Molecular Weight	: 445.26
Molecular Formula	: C <sub>19</sub> H <sub>11</sub> Cl <sub>2</sub> NaO <sub>5</sub> S



#### Glentham Product Specification

Physical Description	: Red to dark brown crystalline powder
Identification (IR)	: To conform to standard
Solubility (0.1% in water)	: Clear, red solution
pH Transition Range	: ~4.6 to ~6.4 (yellow to violet-red/purple)
Wavelength of Maximum Absorption (λ <sub>max</sub> )	: 572 - 578 nm
UV-VIS Absorption	: ≥ 22000 (0.01g/L, water, at λ <sub>max</sub> )
Loss on Drying	: ≤ 10.0%
Version	: v1.0

#### About Chlorophenol Red sodium salt

No further details on record.

#### Storage

Recommended storage temperature: +20°C.

#### Hazards and Transport

Not classified as dangerous for transport.

CLP Classification Skin Irr. 2, STOT SE 3,  
STOT SE 3, Eye Irr. 2A

Signal Word Warning

Hazard Codes H315, H336, H335, H319

This document was generated electronically and is therefore valid without signature. © Glentham Life Sciences Ltd, 2025