

Product Datasheet

GT3722 - Chlorophenol Red

Pictograms

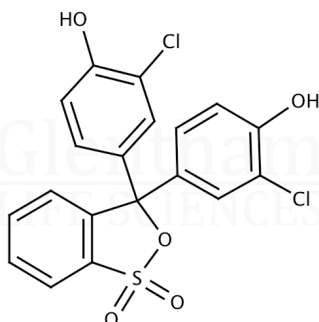


Product Details

Product Name	Chlorophenol Red
Glenthams Code	GT3722
CAS Number	4430-20-0
EINECS	224-619-2
MDL Number	MFCD00005877
PubChem SID	310270027
Related Categories	Biochemicals, Dyes & Stains, Organics, Phenols

Structure

Molecular Weight	: 432.28
Molecular Formula	: C ₁₉ H ₁₂ Cl ₂ O ₅ S



Glenthams Product Specification

Physical Description	: Red to green, red-brown or brown powder or crystals
Solubility (0.1% in ethanol)	: Clear, orange, dark orange or red-orange solution
pH Transition Range(s)	: 4.6 - 7.3 (yellow to purple)
Wavelength of Maximum Absorption (λ _{max})	: 573.0 - 577.0 nm (0.1M NaOH)
Absorptivity (1%/1cm)	: ≥ 1500 (λ _{max} , dried basis)
Loss on Drying	: ≤ 8.0% (1hr at 110 °C)
Assay (spectrophotometry)	: ≥ 90.0%
Version	: v1.1

About Chlorophenol Red

No further details on record.

Storage

Recommended storage temperature: +20°C.

Hazards and Transport

Not classified as dangerous for transport.

CLP Classification	Skin Irr. 2, STOT SE 3, STOT SE 3, Eye Irr. 2A
Signal Word	Warning
Hazard Codes	H315, H336, H335, H319
Precautionary Codes	P280, P261, P302+P352, P305+P351+P338

This document was generated electronically and is therefore valid without signature. © Glenthams Life Sciences Ltd, 2024