

Product Datasheet

GT4851 - Indigo Carmine (C.I. 73015)

Pictograms



Product Details

Product Name	Indigo Carmine (C.I. 73015)
Glenthams Code	GT4851
CAS Number	860-22-0
EINECS	212-728-8
Colour Index	73015
MDL Number	MFC000005723
PubChem SID	310275190
Related Categories	Biochemicals, Dyes & Stains

Glenthams Product Specification

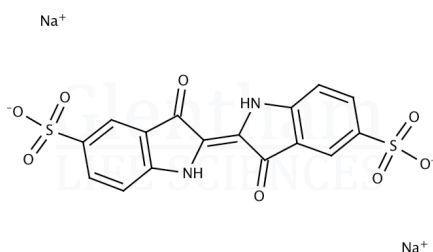
Physical Description	: Blue to dark purple powder
Solubility (1% in water)	: Clear, blue to dark blue solution
pH Transition Range	: 11.5 - 14.0 (blue to yellow)
Loss on Drying	: ≤ 5.0%
Dye Content	: ≥ 85.0% (anhydrous basis)
Version	: v1.0

Structure

Molecular Weight	: 466.36
Molecular Formula	: $C_{16}H_8N_2Na_2O_8S_2$

About Indigo Carmine (C.I. 73015)

No further details on record.



Storage

Recommended storage temperature: +20°C.

Hazards and Transport

Not classified as dangerous for transport.	
CLP Classification	Acute Tox. 4
Signal Word	Warning
Hazard Codes	H302
Precautionary Codes	P280, P261, P301+P312

This document was generated electronically and is therefore valid without signature. © Glenthams Life Sciences Ltd, 2024