

## Product Datasheet

### GT6323 - Bromocresol Purple

Pictograms

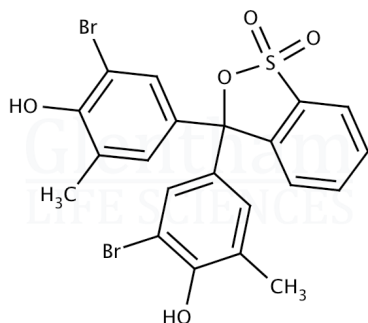


#### Product Details

Product Name	Bromocresol Purple
Glenthams Code	GT6323
CAS Number	115-40-2
EINECS	204-087-8
MDL Number	MFCD00011681
PubChem SID	310268868
Related Categories	Biochemicals, Dyes & Stains, Raw Materials (IVD)

#### Structure

Molecular Weight	: 540.24
Molecular Formula	: C <sub>21</sub> H <sub>16</sub> Br <sub>2</sub> O <sub>5</sub> S



#### Glenthams Product Specification

Physical Description	: Grey to purple, pink or yellow-brown powder
Transition Range	: 5.2 - 6.8 (greenish yellow to blue-violet)
Solubility	: 0.1% in ethanol: Clear, yellow solution
Wavelength of Maximum Absorption (λ <sub>max</sub> )	: λ <sub>max</sub> 1: ~431.0nm : λ <sub>max</sub> 2: ~589.0nm
Absorptivity (1%/1cm)	: 400 - 450 (pH 5.2 at λ <sub>max</sub> 1) : 1000 - 1100 (pH 6.8 at λ <sub>max</sub> 2)
Loss on Drying	: ≤ 3.0% (105°C, 1h)
Version	: v1.0

#### About Bromocresol Purple

A dye and pH indicator of the triphenylmethane family. Bromocresol purple, or BCP, is yellow below pH 5.2 and purple above pH 6.

#### Storage

Recommended storage temperature: +20°C.

#### Hazards and Transport

Not classified as dangerous for transport.

CLP Classification	Skin Irr. 2, STOT SE 3, STOT SE 3, Eye Irr. 2A
Signal Word	Warning
Hazard Codes	H315, H336, H335, H319
Precautionary Codes	P280, P261, P302+P352, P305+P351+P338

This document was generated electronically and is therefore valid without signature. © Glenthams Life Sciences Ltd, 2024