

Product Datasheet

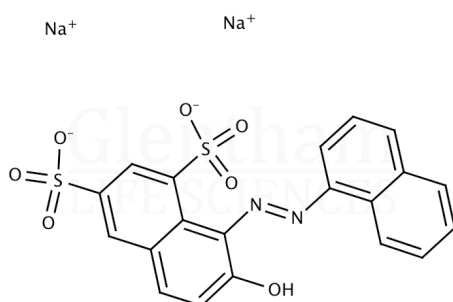
GT6539 - Crystal Ponceau 6R (C.I. 16250)

Product Details

Product Name	Crystal Ponceau 6R (C.I. 16250)
Glentham Code	GT6539
CAS Number	2766-77-0
EINECS	220-441-4
MDL Number	MFCD00013279
Colour Index	16250
PubChem SID	310270558
Related Categories	Dyes & Stains, Raw Materials (IVD)

Structure

Molecular Weight : 502.43
Molecular Formula : $C_{20}H_{12}N_2Na_2O_7S_2$



Storage

Recommended storage temperature: +20°C.

Hazards and Transport

Not classified as hazardous under CLP.
Not classified as dangerous for transport.

Glentham Product Specification

Physical Description	: Dark red to dark brown powder
Solubility (0.1% in water)	: Clear, red solution
Melting Point	: $\geq 300^{\circ}\text{C}$
Wavelength of Maximum Absorption (λ_{max})	: 509 - 514 nm (in water)
Loss on Drying	: $\leq 20.0\%$
Dye Content	: $\geq 75\%$
Version	: v1.0

About Crystal Ponceau 6R (C.I. 16250)

No further details on record.

This document was generated electronically and is therefore valid without signature. © Glentham Life Sciences Ltd, 2024