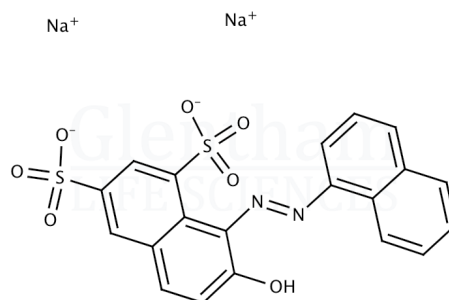


## Product Specification

Product Name	Crystal Ponceau 6R (C.I. 16250)
Glentham Code	GT6539
CAS Number	2766-77-0
EINECS	220-441-4
MDL Number	MFCD00013279
Colour Index	16250
PubChem SID	310270558
Molecular Weight	502.43
Molecular Formula	$C_{20}H_{12}N_2Na_2O_7S_2$
Storage Temp.	+20°C



Property	Specification
Physical Description	Dark red to dark brown powder
Solubility (0.1% in water)	Clear, red solution
Melting Point	≥ 300°C
Wavelength of Maximum Absorption ( $\lambda_{max}$ )	509 - 514 nm (in water)
Loss on Drying	≤ 20.0%
Dye Content	≥ 75%

Specification Version	-	v1.0
Date Created	-	2015-09-03

Glentham Life Sciences confirm that the above referenced product conformed to the information displayed in this document on the quality release date. Please check [www.glentham.com](http://www.glentham.com) or contact us using the details above for the current version of this document.

This document was generated electronically and is therefore valid without signature. © Glentham Life Sciences Ltd, 2024