

Product Datasheet

GT8506 - Bromoxylenol Blue

Product Details

Product Name	Bromoxylenol Blue
Glenthams Code	GT8506
CAS Number	40070-59-5
EINECS	254-780-4
MDL Number	MFCD00005873
PubChem SID	310269029
Related Categories	Biochemicals, Dyes & Stains

Solubility (0.1% in ethanol) : Clear, orange or red to dark orange or dark red solution

pH Transition Range : 5.7 - 7.4 (yellow to blue)

Wavelength(s) of Maximum Absorption : λ_{max1} : ~435nm, λ_{max2} : ~614nm

Absorptivity (1%/1cm) : ≥ 300 (λ_{max1} , pH 5.7)

Absorptivity (1%/1cm) : ≥ 500 (λ_{max2} , pH 7.4)

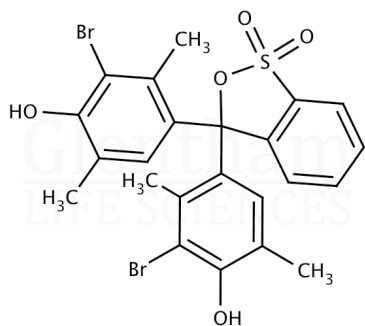
Loss on Drying : $\leq 5.0\%$ (110°C)

Version : v1.0

Structure

Molecular Weight : 568.27

Molecular Formula : $\text{C}_{23}\text{H}_{20}\text{Br}_2\text{O}_5\text{S}$



About Bromoxylenol Blue

No further details on record.

Storage

Recommended storage temperature: +20°C.

Hazards and Transport

Not classified as hazardous under CLP.

Not classified as dangerous for transport.

Glenthams Product Specification

Physical Description : Beige, brown, yellow-orange or purple powder

This document was generated electronically and is therefore valid without signature. © Glenthams Life Sciences Ltd, 2024