

Product Datasheet

GX4029 - Poly(D-lactide)

Product Details

Product Name	Poly(D-lactide)
Glentham Code	GX4029
CAS Number	106989-11-1
Additional CAS	26811-96-1 (L)
Additional CAS	26680-10-4 (DL)

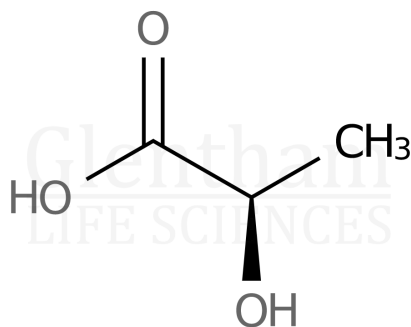
Identification (NMR)	: To conform to structure
Water (KF)	: $\leq 0.5\%$
Version	: v1.0

About Poly(D-lactide)

No further details on record.

Structure

Molecular Weight :
Molecular Formula :



Storage

Recommended storage temperature: +4°C.

Hazards and Transport

Not classified as hazardous under CLP.
Not classified as dangerous for transport.

Glentham Product Specification

Physical Description : White to faint beige solid

This document was generated electronically and is therefore valid without signature. © Glentham Life Sciences Ltd, 2025