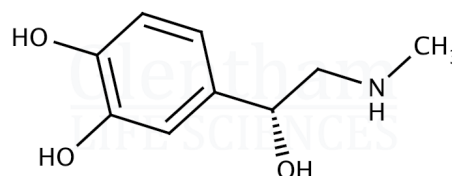


## Certificate of Analysis

|                   |  |
|-------------------|--|
| Product Name      | Epinephrine                                    |
| Glentham Code     | GP2165   |
| CAS Number        | 51-43-4  |
| EINECS            | 200-098-7                                      |
| MDL Number        | MFCD00002204                                   |
| PubChem SID       | 310272599                                      |
| Batch Number      | 134WHM   |
| Molecular Weight  | 183.20   |
| Molecular Formula | C <sub>9</sub> H <sub>13</sub> NO <sub>3</sub> |
| Storage Temp.     | +4°C   |



| Property  | Specification                             | Batch 134WHM                    |
|---|---|---------------------------------|
| Physical Description  | White or almost white crystalline powder  | Almost white crystalline powder |
| Solubility (5% in 0.5M HCl)                                 | Clear, colourless to pale yellow solution | Clear, pale yellow solution     |
| Specific Optical Rotation ([α] <sub>D</sub> <sup>20</sup> ) | -53.5 - -50.0 °                           | -50.7°                          |
| Residue on Ignition   | ≤ 0.1%                                    | 0.05%                           |
| Loss on Drying  | ≤ 2.0%                                    | 0.9%                            |
| Assay   | 98.0 - 102.0 % (dried basis)              | 98.2%                           |

|                       |            |
|-----------------------|------------|
| Specification Version | v1.1       |
| Manufacture Date      | 2022-12-14 |
| Re-Test Date          | 2030-04-04 |

Glentham Life Sciences confirm that the above referenced product conformed to the information displayed in this document on the quality release date. Please check [www.glentham.com](http://www.glentham.com) or contact us using the details above for the current version of this document.

This document was generated electronically and is therefore valid without signature. © Glentham Life Sciences Ltd, 2024