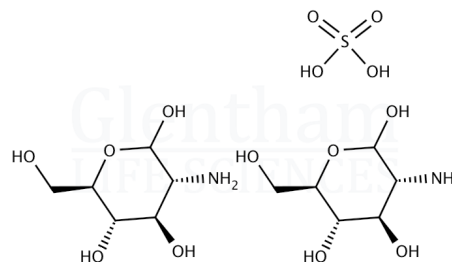


Certificate of Analysis

Product Name	D-Glucosamine sulfate, potassium chloride salt
Glentham Code	GC1036
CAS Number	14999-43-0
EINECS	249-379-6
MDL Number	MFCD00080790
Additional CAS	29031-19-4
Additional CAS	38899-05-7
Additional CAS	216699-44-4
Additional CAS	1296149-08-0
PubChem SID	310274175
Batch Number	242CDR



Molecular Weight	605.52
Molecular Formula	$2(C_6H_{13}NO_5) \cdot H_2SO_4 \cdot 2KCl$
Storage Temp.	+20°C

Property	Specification	Batch 242CDR
Physical Description	White crystalline powder	Conforms
Identification	A, B, C, D according to USP	Conforms
Specific Optical Rotation	+47.0 - +53.0 °	+50.66°
pH (2% in water)	3.0 - 5.0	4.72
Residue on Ignition	26.5 - 31.5 %	29.72%
Chloride (Cl)	11.8 - 12.8 %	11.98%
Sulphates	15.5 - 16.5 %	15.92%
Iron (Fe)	≤ 10ppm	Conforms
Arsenic (As)	≤ 1ppm	Conforms
Lead (Pb)	≤ 3ppm	0.9ppm
Mercury (Hg)	≤ 0.1ppm	0.026ppm
Cadmium (Cd)	≤ 1.0ppm	Conforms
Heavy Metals	≤ 10ppm	Conforms
Sodium (Na)	To pass test	Conforms
Loss on Drying	≤ 1.0%	0.06%
Content	98.0 - 102.0 %	99.45%
Pharmacopoeia Specification(s)	USP	Conforms to USP

Specification Version	v1.0
Manufacture Date	2016-11-13
Re-Test Date	2028-11-09

Glentham Life Sciences confirm that the above referenced product conformed to the information displayed in this document on the quality release date. Please check www.glentham.com or contact us using the details above for the current version of this document.

This document was generated electronically and is therefore valid without signature. © Glentham Life Sciences Ltd, 2025