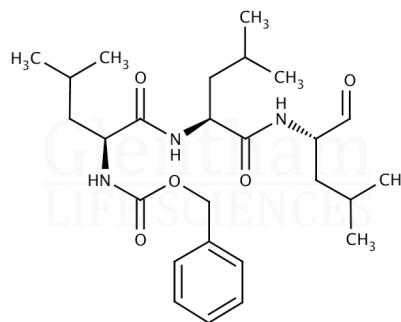


Certificate of Analysis

| | |
|---------------|------------------|
| Product Name | Z-Leu-Leu-Leu-al |
| Glentham Code | GK3641 |
| CAS Number | 133407-82-6 |
| MDL Number | MFCD00674886 |
| PubChem SID | 310281919 |
| Batch Number | 339PQZ |

| | |
|-------------------|---|
| Molecular Weight | 475.63 |
| Molecular Formula | C ₂₆ H ₄₁ N ₃ O ₅ |
| Storage Temp. | -20°C |



| Property | Specification | Batch 339PQZ |
|----------------------------|------------------------------------|--------------|
| Physical Description | White to off-white powder or solid | White solid |
| Solubility (5% in DMSO) | Clear, colourless solution | Conforms |
| Solubility (5% in ethanol) | Clear, colourless solution | Conforms |
| Purity (HPLC) | ≥ 97.0% | 99.3% |

| | |
|-----------------------|------------|
| Specification Version | v1.0 |
| Manufacture Date | 2019-07-17 |
| Re-Test Date | 2029-11-12 |

Glentham Life Sciences confirm that the above referenced product conformed to the information displayed in this document on the quality release date. Please check www.glentham.com or contact us using the details above for the current version of this document.

This document was generated electronically and is therefore valid without signature. © Glentham Life Sciences Ltd, 2025