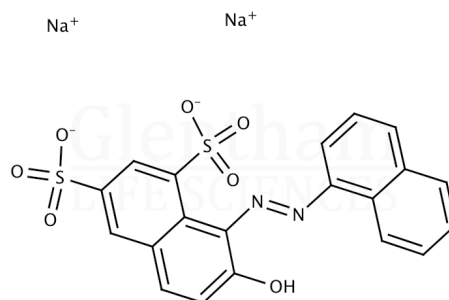


Certificate of Analysis

Product Name Crystal Ponceau 6R (C.I. 16250)
Glentham Code GT6539
CAS Number 2766-77-0
EINECS 220-441-4
MDL Number MFCD00013279
Colour Index 16250
PubChem SID 310270558
Batch Number 490HCA

Molecular Weight 502.43
Molecular Formula $C_{20}H_{12}N_2Na_2O_7S_2$
Storage Temp. +20°C



Property	Specification	Batch 490HCA
Physical Description	Dark red to dark brown powder	Dark reddish brown powder
Solubility (0.1% in water)	Clear, red solution	Conforms
Melting Point	≥ 300°C	Conforms
Wavelength of Maximum Absorption (λ _{max})	509 - 514 nm (in water)	511.2 nm
Loss on Drying	≤ 20.0%	2.45%
Dye Content	≥ 75%	93%

Specification Version v1.0
Manufacture Date 2015-04-17
Re-Test Date 2026-09-21

Glentham Life Sciences confirm that the above referenced product conformed to the information displayed in this document on the quality release date. Please check www.glentham.com or contact us using the details above for the current version of this document.

This document was generated electronically and is therefore valid without signature. © Glentham Life Sciences Ltd, 2024