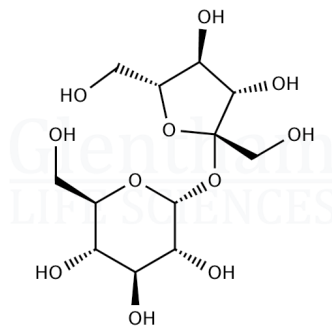


Certificate of Analysis

Product Name Sucrose
Glentham Code GC4473
CAS Number 57-50-1
EINECS 200-334-9
MDL Number MFCD00006626
PubChem SID 310280339
Batch Number 672VKU

Molecular Weight 342.30
Molecular Formula $C_{12}H_{22}O_{11}$
Storage Temp. +20°C



Property	Specification	Batch 672VKU
Physical Description	Colourless to white crystalline powder	White crystalline powder
Identification	IR	Conforms
Heavy Metals	≤ 5ppm	≤ 5ppm
Calcium (Ca)	≤ 0.05%	≤ 0.05%
Residue on Ignition	≤ 0.1%	< 0.1%
Reducing Sugars	≤ 0.1%	≤ 0.1%
Specific Optical Rotation	66.3 - 67.0 °	+66.7°
Purity	≥ 99.5%	≥ 99.9%

Specification Version v1.0
Manufacture Date 2024-03-12
Re-Test Date 2031-03-07

Glentham Life Sciences confirm that the above referenced product conformed to the information displayed in this document on the quality release date. Please check www.glentham.com or contact us using the details above for the current version of this document.

This document was generated electronically and is therefore valid without signature. © Glentham Life Sciences Ltd, 2024