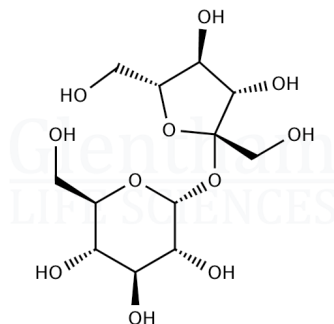


Certificate of Analysis

Product Name Sucrose, GlenBiol™, suitable for molecular biology
Glentham Code GC3201
CAS Number 57-50-1
EINECS 200-334-9
MDL Number MFCD00006626
Batch Number 682SMY

Molecular Weight 342.30
Molecular Formula $C_{12}H_{22}O_{11}$
Storage Temp. +20°C



Property	Specification	Batch 682SMY
Physical Description	White crystalline powder or colourless crystals	White crystalline powder
Solubility (50% in water)	Clear, colourless solution	Conforms
Heavy Metals	≤ 5ppm	Conforms
RNase	None detected	Conforms
DNase	None detected	Conforms
Proteases	None detected	Conforms
Purity	≥ 99.5%	99.9%

Specification Version v1.0
Manufacture Date 2024-02-20
Re-Test Date 2031-02-15

Glentham Life Sciences confirm that the above referenced product conformed to the information displayed in this document on the quality release date. Please check www.glentham.com or contact us using the details above for the current version of this document.

This document was generated electronically and is therefore valid without signature. © Glentham Life Sciences Ltd, 2024