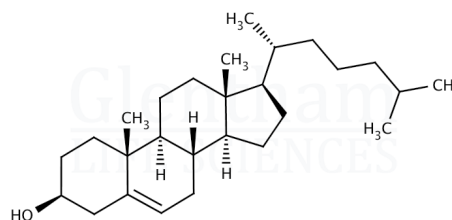


## Certificate of Analysis

Product Name	Cholesterol, non-animal origin
Glentham Code	GE7110
CAS Number	57-88-5
EINECS	200-353-2
MDL Number	MFCD00003646
Batch Number	914KOA
Molecular Weight	386.66
Molecular Formula	$C_{27}H_{46}O$
Storage Temp.	+4°C



Property	Specification	Batch 914KOA
Physical Description	White to almost white crystalline powder	White crystalline powder
Melting Point	147 - 150 °C	149.3°C
Identification	TLC	Conforms
	Test C according to EP	Conforms
Specific Optical Rotation	-43.0 - -39.0 ° (c=2, CHCl <sub>3</sub> )	-40.2°
Solubility (1% in ethanol)	Clear solution (2h, 50°C)	Conforms
Acidity	≤ 0.3ml	≤ 0.1ml
Sulphated Ash	≤ 0.1%	Conforms
Heavy Metals	≤ 10ppm	Conforms
Loss on Drying	≤ 0.3% (4h, 60°C)	≤ 0.1%
Total Aerobic Microbial Count	≤ 100CFU/g	≤ 10CFU/g
Mould and Yeast	≤ 100CFU/g	≤ 10CFU/g
Endotoxins	≤ 1.0EU/mg	≤ 0.1EU/mg
Assay	≥ 99.0% (cholesterol, dried basis)	99.3%
Pharmacopoeia Specification(s)	EP	Conforms
Source	Vegetal	Conforms

Specification Version	v1.0
Manufacture Date	2023-05-17
Re-Test Date	2026-05-11

Glentham Life Sciences confirm that the above referenced product conformed to the information displayed in this document on the quality release date. Please check [www.glentham.com](http://www.glentham.com) or contact us using the details above for the current version of this document.

This document was generated electronically and is therefore valid without signature. © Glentham Life Sciences Ltd, 2024