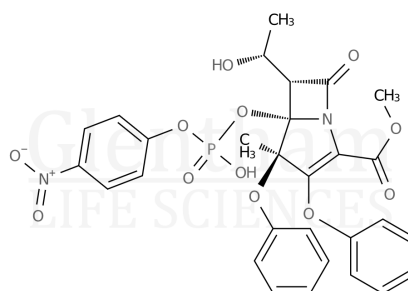


## Certificate of Analysis

Product Name	Proteinase K
Glentham Code	GE0990
CAS Number	39450-01-6
EINECS	254-457-8
MDL Number	MFCD00132129
Batch Number	946GSE

Molecular Weight	-
Molecular Formula	-
Storage Temp.	-20°C



Property	Specification	Batch 946GSE
Physical Description	White or almost white lyophilized powder	White lyophilized powder
Solubility	≥ 20mg/ml in water	≥ 20mg/ml
DNA	≤ 10 pg/mg enzyme	≤ 10 pg/mg
DNase	Not detected	Not detected
RNase	Not detected	Not detected
Protein Content	≥ 70% (based on absorbance at 280nm)	≥ 70%
Activity	≥ 30units/mg (pH 7.5, 37°C, dried basis)	≥ 30units/mg

Specification Version	v1.0
Manufacture Date	2023-05-15
Re-Test Date	2029-05-20

Glentham Life Sciences confirm that the above referenced product conformed to the information displayed in this document on the quality release date. Please check [www.glentham.com](http://www.glentham.com) or contact us using the details above for the current version of this document.

This document was generated electronically and is therefore valid without signature. © Glentham Life Sciences Ltd, 2025