

## Product Datasheet

### GC0425 - Chitin

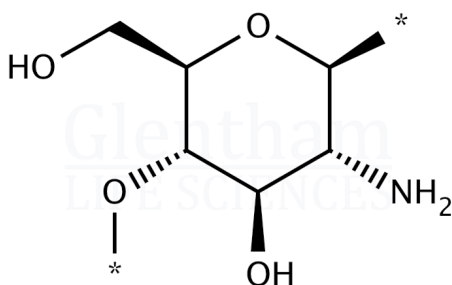
#### Product Details

Product Name	Chitin
Glentham Code	GC0425
CAS Number	1398-61-4
EINECS	215-744-3
Numéro MDL	MFCD00466914
Related Categories	APIs, Carbohydrates, Biochemicals, Natural Products, Polysaccharides, Chitin & Chitosan

Physical Description	: White to tan, orange or pink powder
Cadmium (Cd)	: ≤ 1ppm
Mercury (Hg)	: ≤ 0.1ppm
Lead (Pb)	: ≤ 0.5ppm
Arsenic (As)	: ≤ 1ppm
pH (1% in water)	: 6.0 - 8.0
Water	: ≤ 10.0%
Protein	: ≤ 1.0%
Ash	: ≤ 1.0%
Particle Size	: ≤ 0.5mm
Version	: v1.2

#### Structure

Molecular Weight : [203.19]<sub>n</sub>  
Molecular Formula : [C<sub>8</sub>H<sub>13</sub>NO<sub>5</sub>]<sub>n</sub>



#### About Chitin

Chitin is a polysaccharide naturally found in the exoskeletons of arthropods and is composed of  $\beta$ -1,4, linked N-acetyl-D-glucosamine units. The applications of chitin range from simply being a thickening agent to being used in the biomedical field due to its antimicrobial activity. It is also used to study chitinases and other related enzymes.

#### Storage

Recommended storage temperature: +20°C.

#### Hazards and Transport

Not classified as hazardous under CLP.  
Not classified as dangerous for transport.

#### Glentham Product Specification

This document was generated electronically and is therefore valid without signature. © Glentham Life Sciences Ltd, 2025